



↑ 中國陽長臂是 *Cheirotonus* 屬裡頭最大型的種類，體長可超過 80 mm。  
*C. jasoni* is the largest of *Cheirotonus* scarabs. Males can exceed 80 mm.

# 長臂金龜

## Long-arm Scarabs

↓ 茶色長臂金龜。66 mm。2007。標本李柏濬提供  
*Euchirus longimanus*. Dried specimen provided by Lee Buo-hao

↘ 台灣長臂金龜。68 mm。  
*Cheirotonus formosanus*.

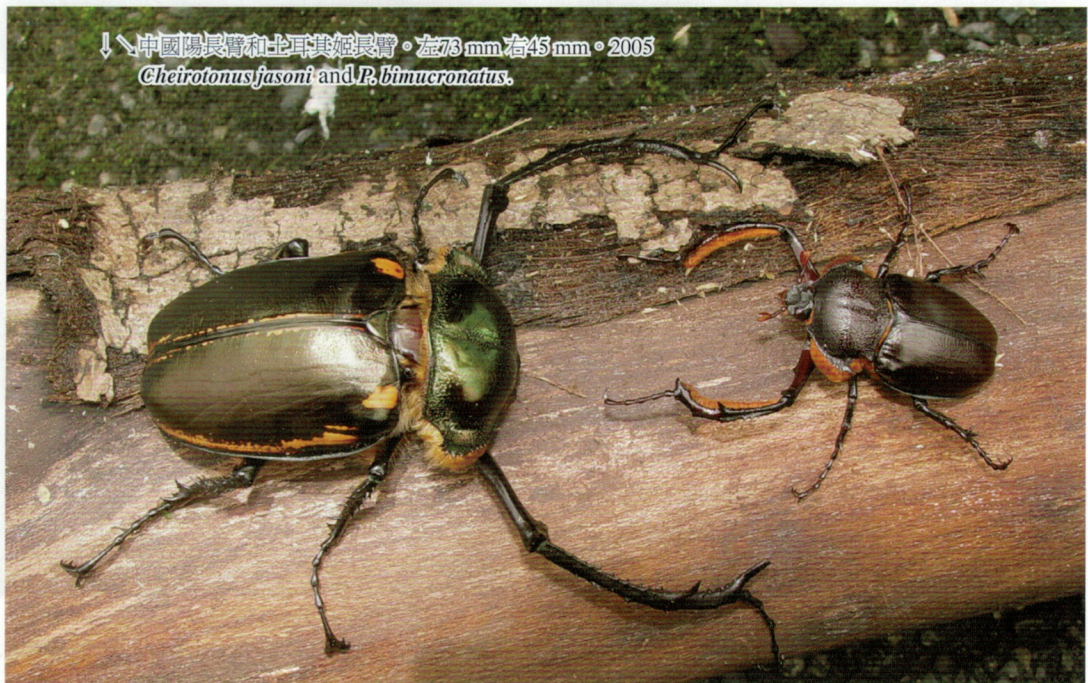






長臂金龜雖然不長犄角，但是牠碩大的體型、豔麗的色彩，以及超長比例的前腳一樣讓許多飼育者趨之若鶩。長臂金龜隸屬於金龜科中的長臂金龜亞科 (Euchirinae)，總共有三屬，為 *Euchirus*、*Cheirotonus*，以及 *Propomacrus*。 *Euchirus* 屬裡頭擁有體型最大的茶色長臂金龜 *Euchirus longimanus*，體長可達 85 mm。 *Cheirotonus* 屬擁有最多的種類。這一屬長臂金龜的前胸背板都泛著紫色到綠色的強烈金屬光澤，翅鞘也都點綴著或多或少的橘色花紋，非常美麗。台灣長臂金龜也是這一屬的成員。不過長臂金龜裡頭也有小不點的成員。產於歐亞交接處的「土耳其姬長臂金龜」 *Propomacrus bimucronatus* 和產於中國大陸華南各省的超稀有種類「大衛長臂金龜」 *P. davidi*，體長往往不超過 50 mm。

Long-arm scarabs don't grow horns, but their massive body, versatile colors, and impressive forelegs have got many hobbyists mesmerized. The long-arm scarabs belong to the Subfamily Euchirinae. There are three genera: *Euchirus*, *Cheirotonus*, and *Propomacrus*. The biggest of them all is *Euchirus longimanus*, which is capable of exceeding 85 mm. The Genus *Cheirotonus* contains the most species. Species in this genus have metallic shines ranging from violet to green on the pronotum. Their elytra also have varying degree of orange patterns. However, not all long-arm scarabs are huge. *Propomacrus bimucronatus* from Eurasia and *P. davidi* from China usually don't exceed 50 mm.



↓ 中國陽長臂和土耳其姬長臂。左 73 mm 右 45 mm。2005  
*Cheirotonus fasoni* and *P. bimucronatus*.





↑西瓜皮長臂金龜。63 mm。2007  
*Euchirus dupontianus*.

最適合飼育長臂金龜的溫度為22-25°C，但是28°C對土耳其姬長臂金龜的飼育卻沒有負面影響。長臂金龜不論是用腐植土或是顆粒細膩的發酵木屑都會產卵。*Euchirus*和*Propomacrus*屬的雌蟲都可以輕易產超過100粒卵；*Cheilotonus*屬的雌蟲通常也能夠產70-80粒卵。長臂金龜的卵期大約1個月。幼蟲孵化以後最適合的飼料是發酵木屑。雖然腐植土也可以用來飼養幼蟲，但是發酵木屑能夠讓幼蟲長得更大。大型種類的長臂金龜通常孵化15-24個月後羽化，不過有10%左右的幼蟲孵化後1年內就會羽化，也有一些個體會拖到3年一化。前蛹期大約30天。蛹期大約60天。新成蟲蟄伏2-4個月。開始活動以後可活6-8個月，算是很長壽的金龜子。



↗長臂金龜的幼蟲適合用腐植土或是發酵木屑飼養。2006  
Long-arm scarab larvae can be fed flake soil or fermented decayed wood flakes.

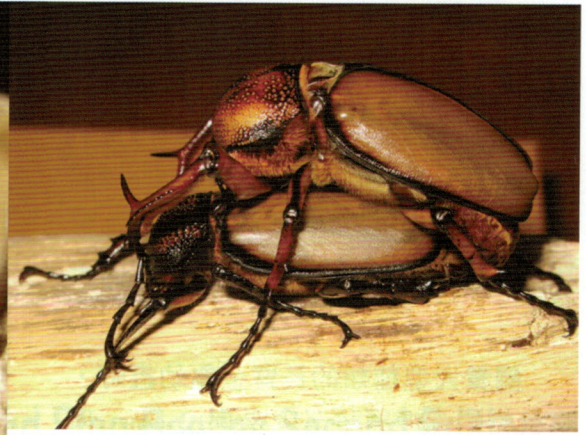


↗長臂金龜三齡幼蟲頭部特寫。2006  
Close-up of L3 long-arm scarab head.



↗長臂金龜的幼蟲可以超過50公克。2006  
Long-arm scarab larvae can weigh over 50 grams.



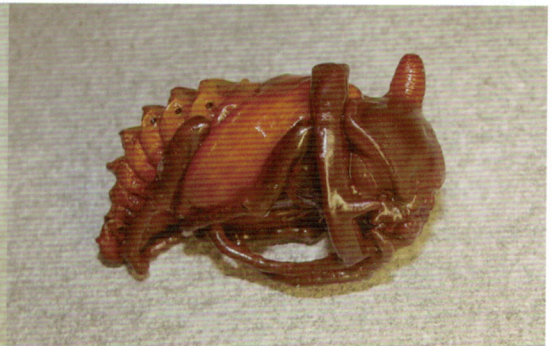


↗ 交配中的大衛長臂金龜。♂ 45 mm ♀ 39 mm。2008  
*Propomacrus davidi* mating. Photo by Willy Chang

↘ 大衛長臂金龜。雌性長臂金龜缺乏「長臂」。2008。張懷仁攝  
*Propomacrus davidi*. Female long-arm scarabs lack "long arms." Photo by Willy Chang



↗ 雄性中國陽長臂蛹。2007。活體林琨芳提供  
Male *Cheirotonus jasoni* pupa. Live specimen provided by Ralf Lin



↗ 雄性中國陽長臂蛹。前胸背板的突起羽化時會消失。2007。活體林琨芳攝提供  
Male *Cheirotonus jasoni* pupa. Protrusion on pronotum disappears at eclosion. Live specimen provided by Ralf Lin

The ideal temperature range is 22-25°C, but 28°C does not seem to bother *P. bimucronatus*. Long-arm scarabs will oviposit in both flake soil and fermented decayed wood flakes with fine particle size. *Euchirus* and *Propomacrus* females easily oviposit over 100 eggs. *Cheirotonus* females oviposit 70-80 eggs. Egg duration is about 30 days. Best feed for larvae is fermented decayed wood flakes. Flake soil can be used to rear larvae, but fermented decayed wood flakes grow bigger larvae. For the large species, larvae usually become adults 15-24 months after hatching. However, about 10% of larvae become adults within one year. Some individuals may take up to three years to eclose. The pre-pupa period is about 30 days. The pupa period is about 60 days. New adults stay inactive for 2-4 months. Once active, adults can live 6-8 months.



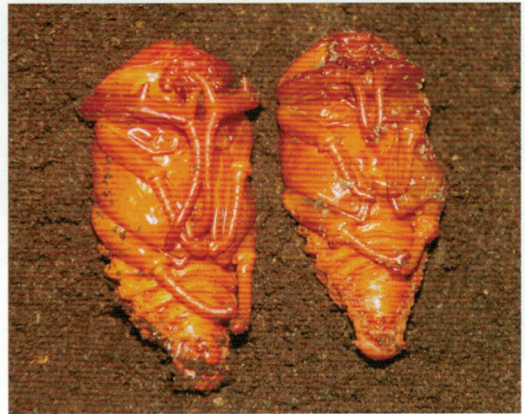


土耳其姬長臂金龜的生活史非常短。如果有交配的話，成蟲1個月左右就會死去。如果沒有交配可活2-4個月。卵1個月內便會孵化。幼蟲期只有6-8個月。蟄伏期只有7-10天。從幼蟲開始製作蛹室到變成成蟲並且產卵只需2個半月。

飼養大型種類的長臂金龜幼蟲時，腐植物的深度應該至少要有12 cm，理想深度是15 cm。大型個體的蛹室可長達10 cm，而且有時候幾乎是垂直的。如果腐植物深度不足，幼蟲有可能爬到土表化蛹，大幅提高化蛹或是羽化失敗的機率。

*Propomacrus bimucronatus* have a very short life cycle. If mated, adults die within a month. If not mated, adults can live 2-4 months. Eggs hatch within 30 days. Larval duration is 6-8 months. New adults stay inactive for 7-10 days. From the onset of pupal cell construction to becoming adult and laying eggs only takes 2.5 months.

When rearing larvae of large long-arm scarabs, the depth of the substrate should be at least 12 cm, with 15 cm being ideal. Large pupal cells can reach 10 cm in length and some are positioned vertically. If the substrate is too shallow, the larva may pupate on the surface, dramatically increasing the chance of deformity and death.



♂ 雄性和雌性的中國陽長臂金龜蛹。2006。張懷仁攝  
Male and female *C. jasoni* pupae. Photo by Willy Chang



♂ 蛹室中的土耳其姬長臂金龜。2005  
*Propomacrus bimucronatus* in pupal cells.



♂ 雄性土耳其姬長臂金龜。45 mm。2005  
Male *Propomacrus bimucronatus*.



## 沉醉兜鍬 二版

For the Love of Rhinoceros and Stag Beetles Second Edition

---

飼育資訊：柯心平、賴廷奇

攝影：柯心平、賴廷奇

撰文：賴廷奇

封面設計：黃中道

美術設計：陳怡純、邱建樺、李杰、黃中道

---

發行人：賴廷奇

出版者：賴廷奇

聯絡地址：111台北市士林區至善路二段421巷30弄6號

聯絡電話：02-2841-1045

傳真：02-2841-3695

E-mail：dynastinae@yahoo.com

<http://www.insectweb.org>

---

版次：二版

出版日期：2008年10月

定價：新台幣1500元

ISBN：978-957-41-5817-1

印刷：皇城廣告印刷事業股份有限公司

本書如有缺頁、破損、倒裝，請寄回更換。

國家圖書館出版品預行編目資料

沉醉兜鍬 = For the love of rhinoceros and stag beetles /  
賴廷奇撰文；柯心平, 賴廷奇攝影. -- 二版. -- 臺北市：  
賴廷奇, 2008. 10

冊：公分

中英對照

ISBN 978-957-41-5817-1 (全套：精裝)

1. 甲蟲 2. 動物圖鑑

387.785025

97018764